



**Developmental
Pathways**

Welcome to
**Developmental Pathways’
System Changes Town Hall:
*Current DP Members and Families***

October 3, 2023



Language Justice

The right to communicate in the language you feel most connected with- the language of your heart. We will be using interpretation as a tool for opening communication.

El derecho a expresarse en el idioma con el que se sientan más cómodos y conectados: el idioma de su corazón. Usaremos la interpretación como una herramienta para expandir la comunicación.

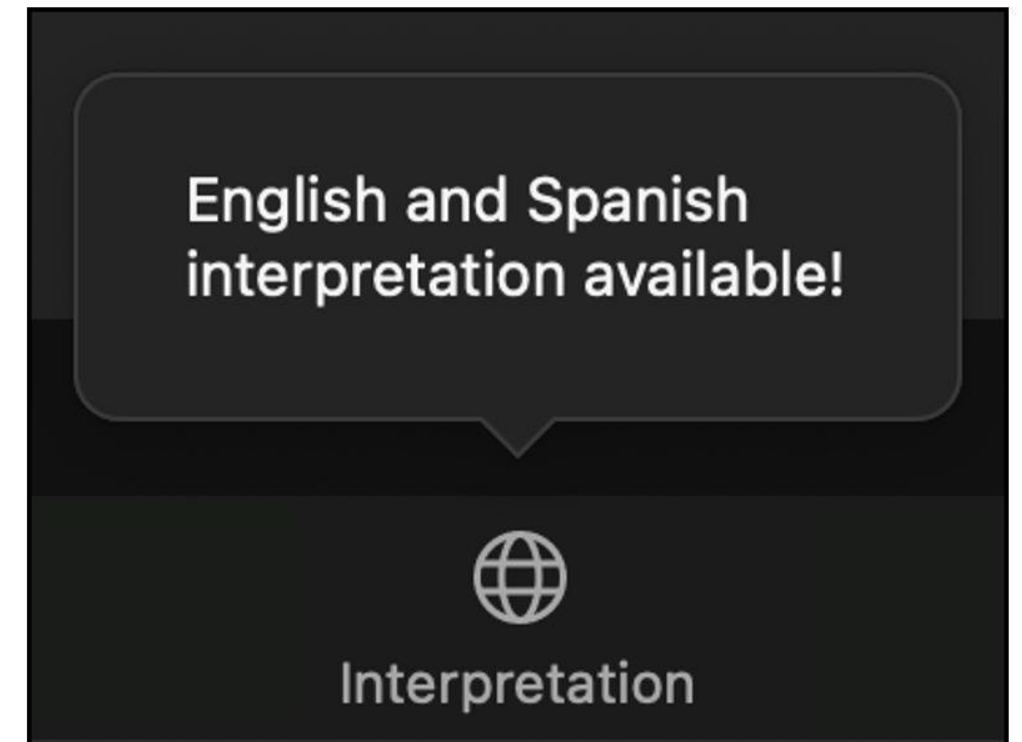


If you can't hear... Si no puede escuchar...

Don't suffer in silence. Someone from the team will help you. No sufra en silencio. Alguien del equipo le ayudará.

Zoom Interpretation / Interpretacion por Zoom

- In your meeting/webinar controls, click Interpretation.
- Click the language that you would like to hear.
- (Optional) To only hear the interpreted language, click Mute Original Audio



- En los controles de la reunión o el seminario web, hacer clic en Interpretación.
- Hacer clic en el idioma que desee escuchar.
- (Opcional) Para escuchar solo el idioma interpretado, haga clic en Silenciar audio original.

Our Agenda:

How we will spend our time together

- 1. A 30-minute presentation given by DP Leadership**
- 2. Q&A Session**

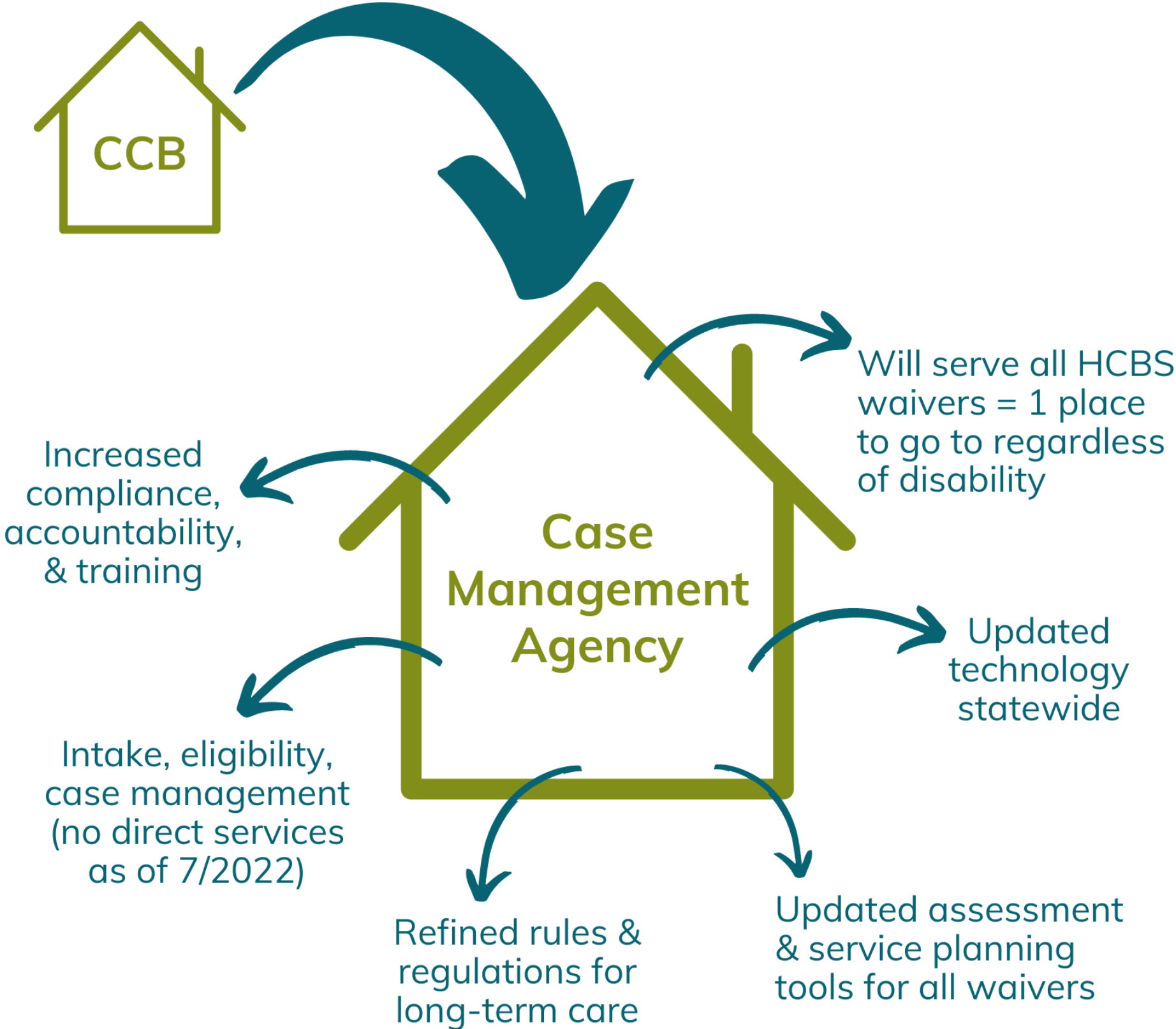
Listen to our Executive Director
and Chief Executive Officer
Matt VanAuken



Colorado System Change: What is the change?

Future of Case Management

The systemic goal of Case Management Redesign (CMRD) is better outcomes for individuals and families across Colorado.



Intended Outcomes:

Why has this change occurred?

Additionally, in pursuing CMRD, Colorado hopes to improve outcomes for individuals and families accessing long-term care supports and making case management work better for everyone.

5

Key Priority Outcomes for this work

1 Ensure Compliance

To help safeguard federal funding

2 Improve Quality Outcomes

Focusing on person-centered supports

3 Improve system Simplicity

To help make long-term services easier to navigate

4 Increase system Stability

Including streamlined sustainable operations

5 Increase Accountability

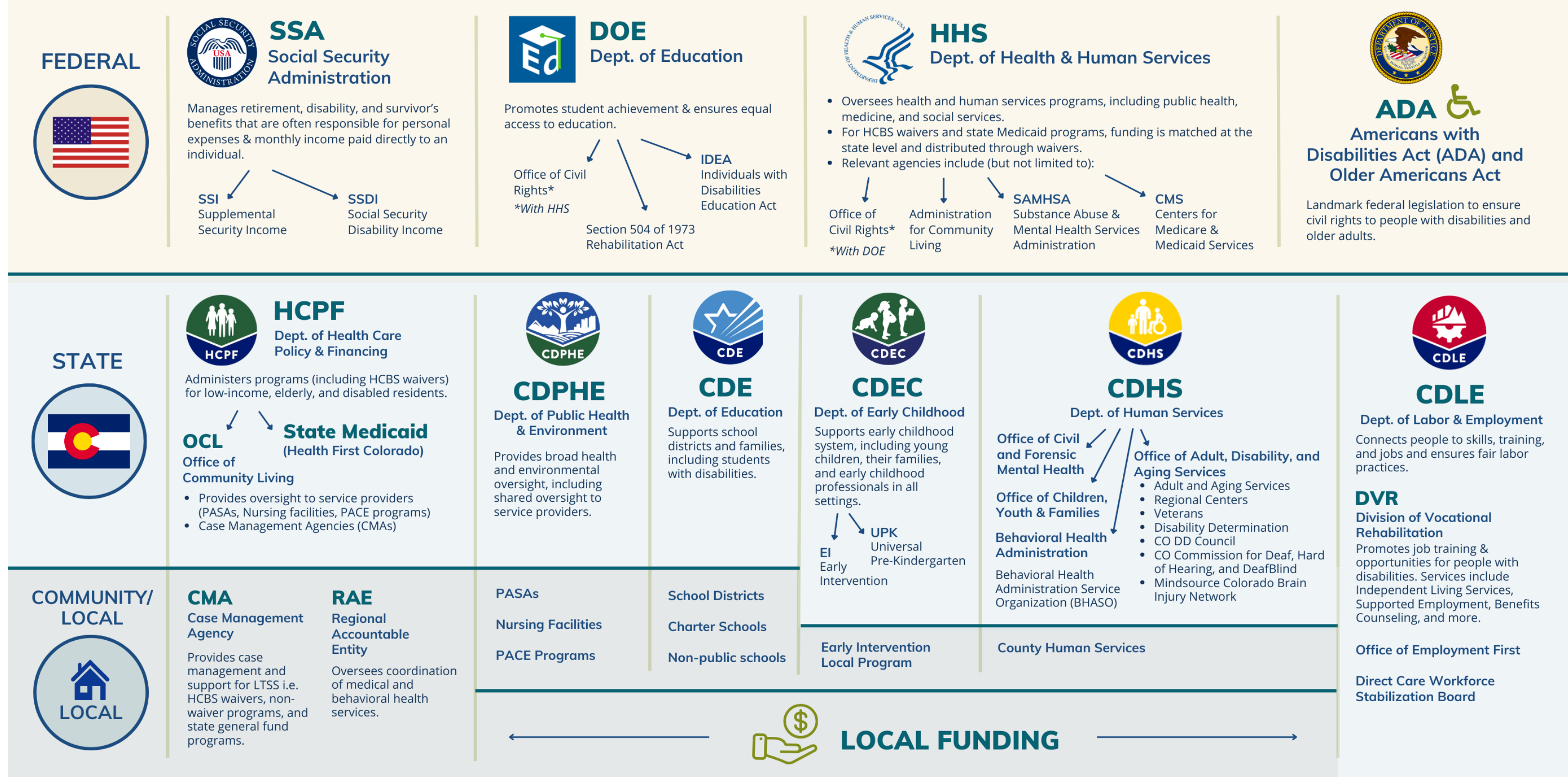
Including increasing consistency, equity in access, overall quality in standards of care

State System: How does this look at the state level?



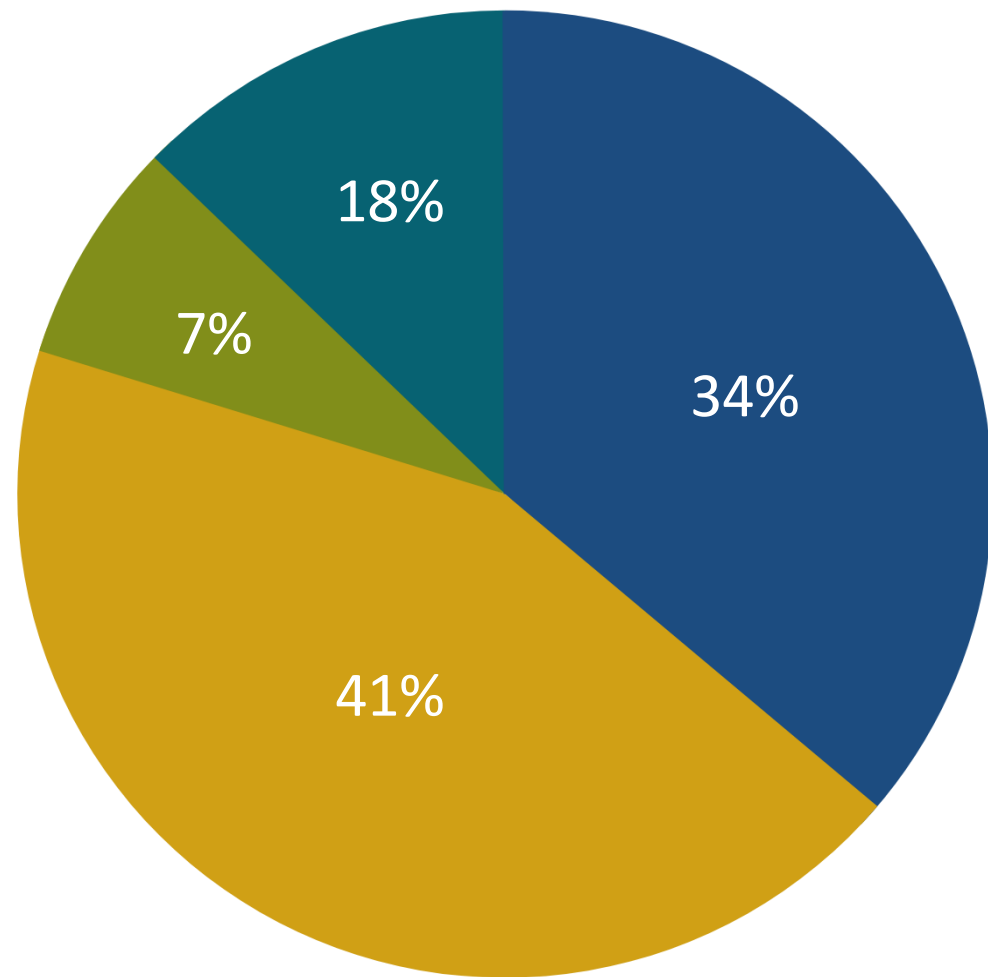
An Introduction to the Disability System in Colorado

July 2023



Who is Developmental Pathways Today?

Almost 60 years of service to our community



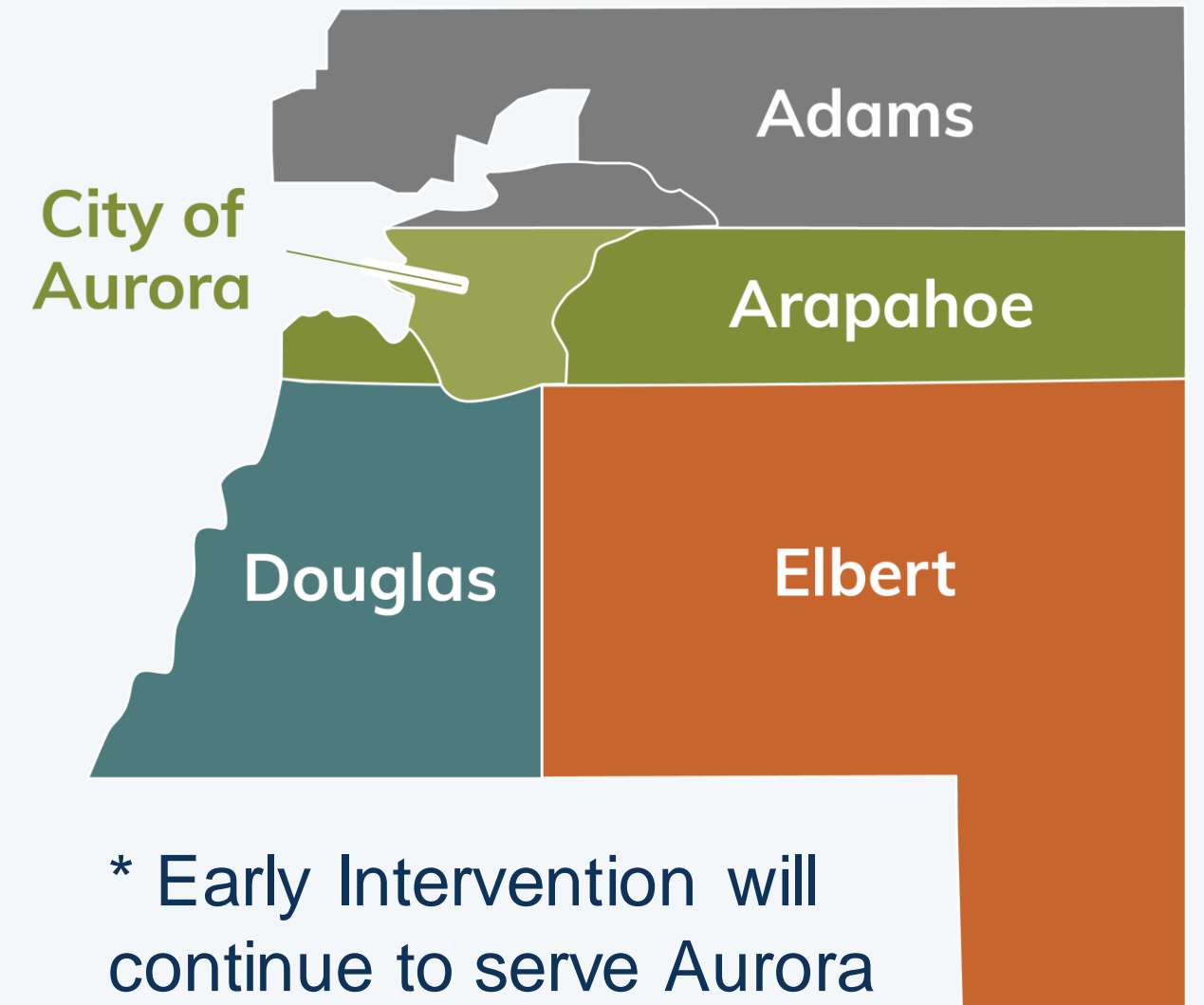
- Early Intervention
- Case Management
- State Funded Programs
- Community Outreach Waitlist



375+ Staff



\$49M Budget (FY23)



* Early Intervention will continue to serve Aurora (including Adams County)

What is the Future of Developmental Pathways?

Almost 60 years of service to our community

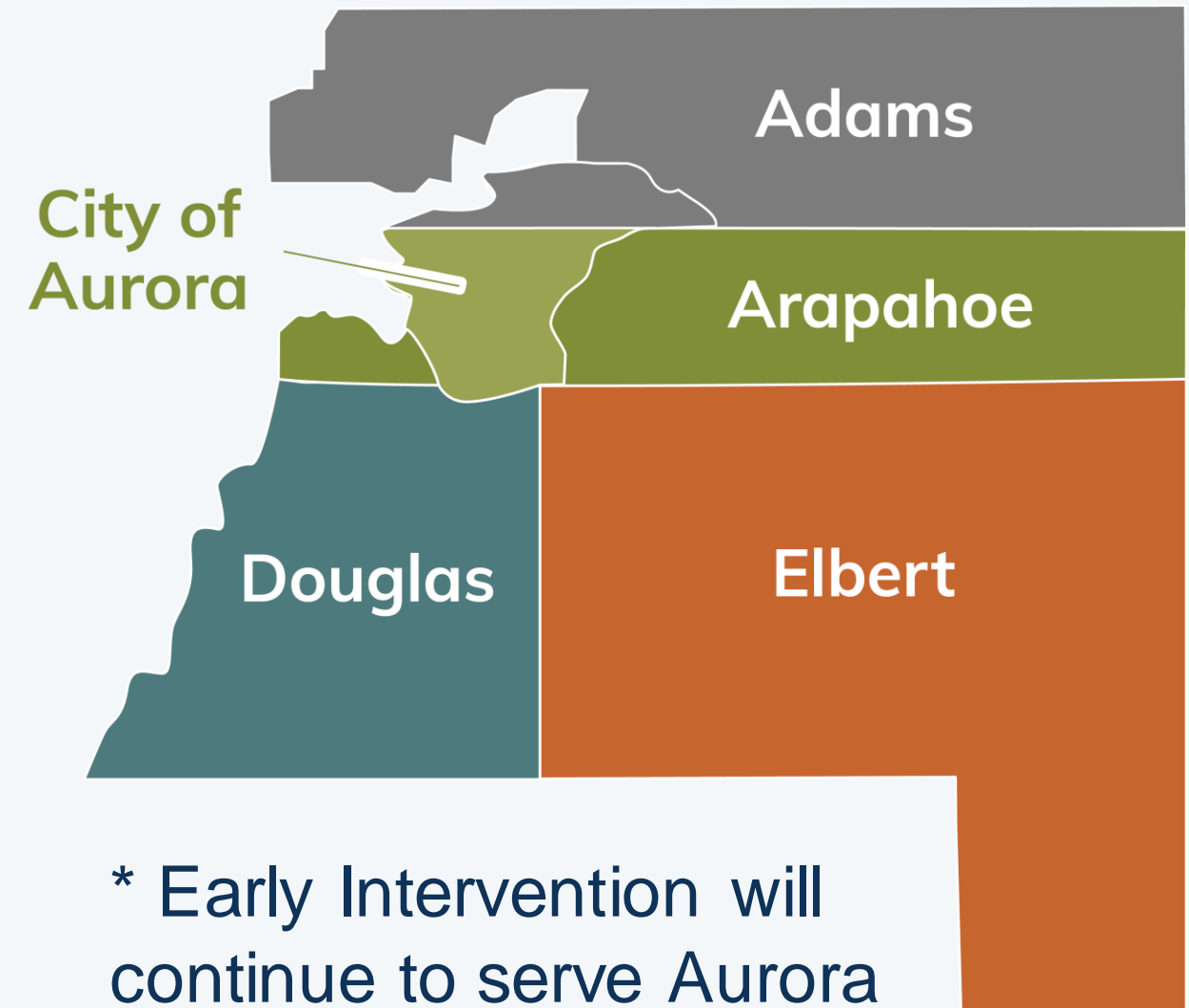
Total Estimated Population Served as of July 2024:
16,793

12,556
Estimated Individuals Served by CM After CMRD

9,136
HCBS Waiver Programs

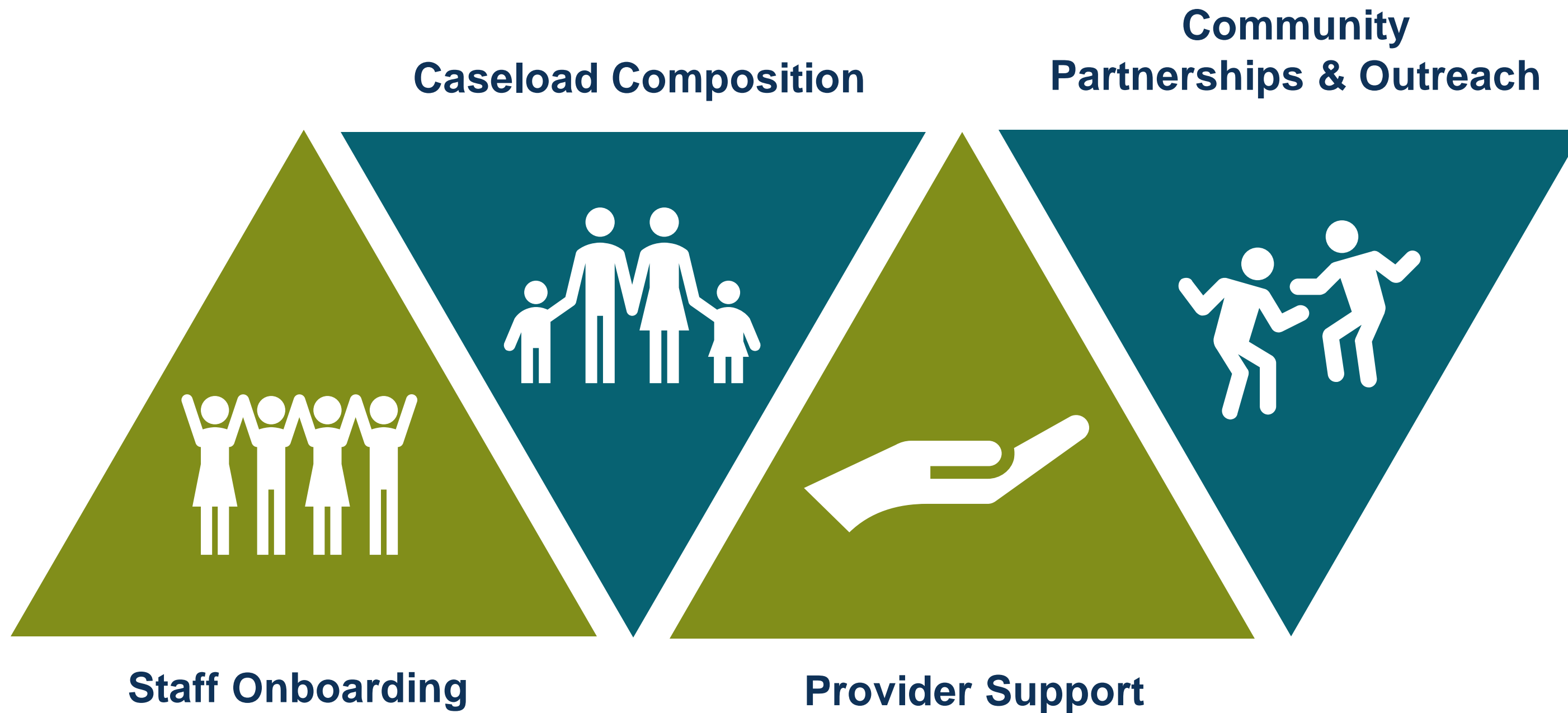
2,873
Non-HCBS Waiver Programs

547
State General Funded Programs



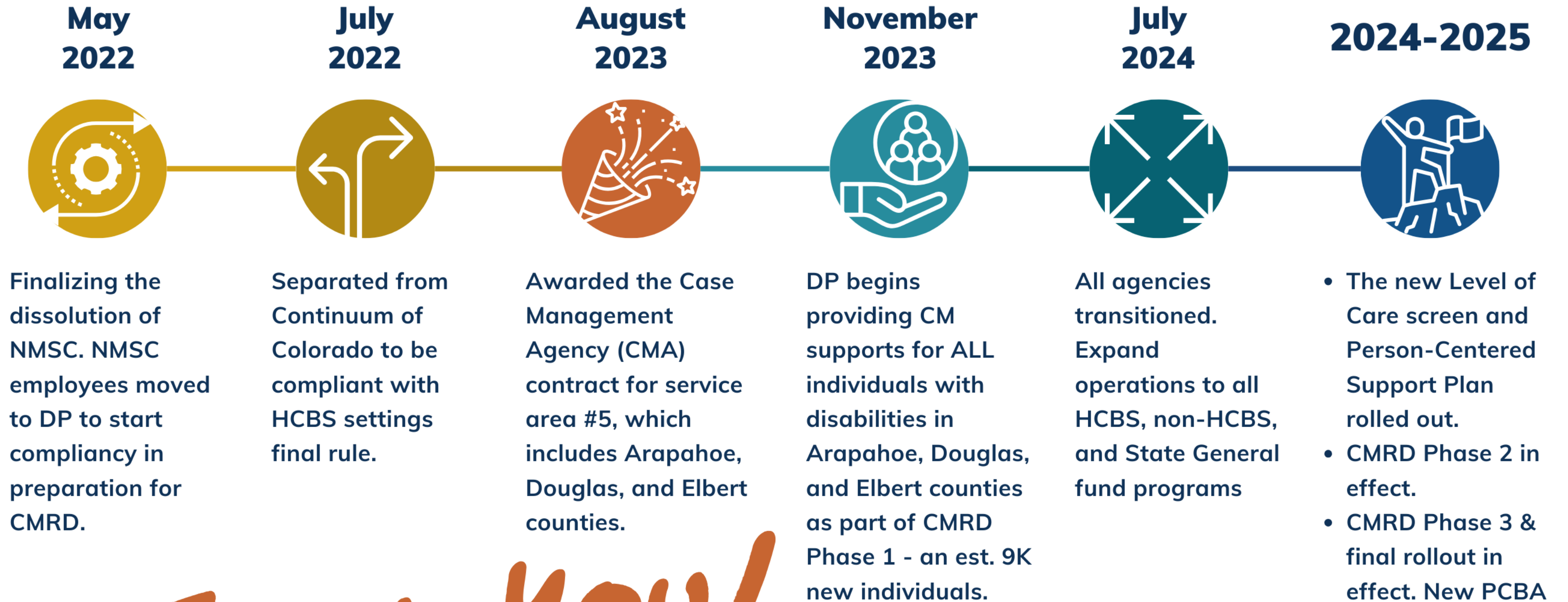
* Early Intervention will continue to serve Aurora (including Adams County)

System Change (CMRD) & DP



Future Planning

Expected timelines/outcomes



THANK YOU!

to all who have been a part of this work!

How we hope to approach Q&A

We are here to listen and answer questions.

We ask that everyone here:

- **Enter with open-mindedness and sincerity**
- **Listen to all points of view**
- **Share the floor**
- **Respect confidentiality**
- **Help us shape the future**

Steps to Submit a Question Virtually

- 1. Tap Ask a Question.**
- 2. Enter your question into the Q&A box.**
- 3. Tap the send button to send your question to the host.**
- 4. If the host replies via the Q&A, you will see a reply in the Q&A window.**
- 5. The host can also answer your question live (out loud).**



Have more questions or do you need more individualized support?



Amy Grogan
Vice President of
Case Management



Kristin Yoder
Director of Systems
Navigation



Michelle Bauman
Vice President of Case
Management Operations



Nicki Polhamus
Director of Case
Management



Dennis Roy
Director of Program
Quality



Alyssa Pae
Director of Case
Management

Contact us

cmatransitions@dpcolo.org

720-984-6584

dpcolo.org



**Developmental
Pathways**

Thank you